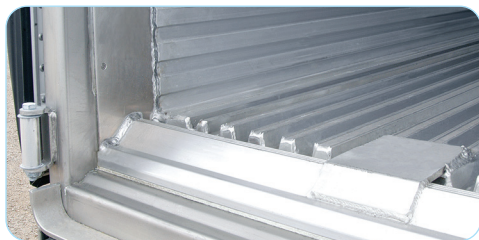




Product protection is a top priority

The Food Safety and Modernization Act (FSMA) states that, "carriers must provide assurance to shippers that transport vehicles are clean and foods that require refrigeration for safety are transported under adequate temperature control." Utility thinks beyond the adequate by manufacturing reefers that surpass FSMA compliance.

■ Watertight Aluminum Floor & Wearband



The easy-to-clean 1½" heavy-duty extruded aluminum duct floor has a 20,000 lb capacity with an integrated ¾" thick, heavy-duty 10" wearband. In the standard configuration, neither the floor nor the wearband have exposed fasteners to back out or leak moisture into the foam insulation. All seams in both the floor and the wearband turn-up are welded full length, creating a water tight barrier. This minimizes the risk of pathogens getting into the trailer superstructure and into refrigerated products.

■ Foam mandrel foam-in-place insulation



A Utility 3000R® delivers optimum thermal efficiency. Our unique foam-in-place insulation provides assurance that it will deliver superior temperature control. Only Utility's foam mandrel technology provides 360-degree 100% void-free insulation, and Utility guarantees it. This process also reduces the use of fasteners throughout the trailer, eliminating points of entry to moisture and bacteria.

■ UCC R2 lining



Utility's high impact lining is found on the complete interior—side walls, front walls, roof, and rear doors of the 3000R. This wards off damage from forklift impact, which reduces maintenance costs and minimizes the risk of heat loss, moisture, and pathogens getting into insulation.

■ Thermal efficiency



The bonded foam "sandwich" design of Utility's Barrier Door® and unique vinyl gasket seal, reduce weight and helps maintain temperature better than any other door design. The 3000R reduces heat transfer in another critical way too. A low conduction thermal break between the threshold and buckplate optimizes thermal efficiency and lowers reefer unit operating costs.

■ Best in class cleanability



Less fasteners and Utility's FDA compliant lining, mean less locations for moisture to get trapped. Moisture traps are where pathogens can grow. The extruded aluminum lining corner closures are engineered with capture channels that don't require fasteners. The Utility design ensures best in class cleanability using industry standard practices, helping you achieve FSMA compliance.

■ Optional air return bulkhead



Removable air return bulkhead provides convenient access to refrigeration unit, making it easier to clean behind the bulkhead and the unit's coil, a common location for pathogen growth.