



FEATURES

3000R®

Redefining standard features

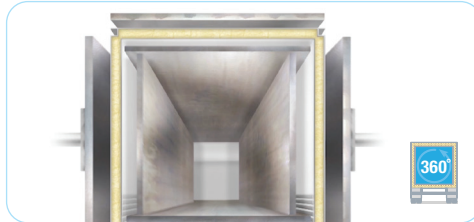
Off the assembly line, the 3000R® offers a more comprehensive array of standard features than any other reefer; features which increase trailer durability, lower trailer weight, and deliver a high level of thermal efficiency. That is why you can be confident that your 3000R is equipped with technology that makes it stronger, lighter and better.

■ Utility-designed rear Barrier Door®



The bonded foam "sandwich" design reduces weight, optimizes thermal efficiency, and provides a tight seal. Hardware is mounted without "thru-holes" into the foam cavity, reducing moisture entry points.

■ Foam mandrel with foam-in-place insulation



Foam-in-place insulation provides 360-degree foam to ensure that the entire trailer is fully insulated, 100% void-free. With no joints to foam later, this process delivers optimum thermal efficiency.

■ .065" UCC R2 lining



Utility's high impact lining on the complete interior reduces maintenance costs, and wards off damage from forklift impact.

■ Hendrickson® ULTRAA-K® 40K air ride & slider system



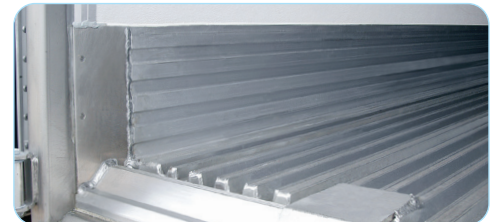
The ULTRAA-K 40K includes a heavy-duty slider box and Quik-Draw® air-operated pin pull mechanism, improves load protection and lowers tare weight. Zero Maintenance Damping® (ZMD®) technology with shockless ride provides added driver comfort.

■ ConMet® PreSet Plus® Premium wheel end system



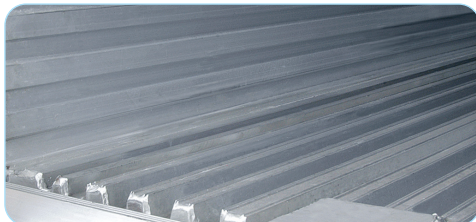
ConMet PreSet Plus includes iron hub, seals, bearings, spacer and spindle nut. This premium system also comes with an 8-year warranty.

■ Integrated heavy-duty 10" high wearband



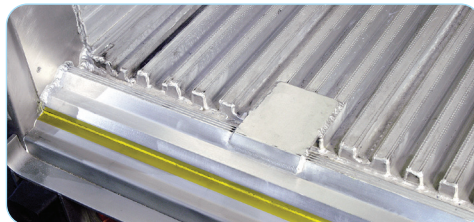
$\frac{3}{16}$ " thick, it provides greater protection against fork truck impacts. Fasteners are not exposed and will not back out or leak moisture into foam insulation.

■ 20K aluminum duct floor system



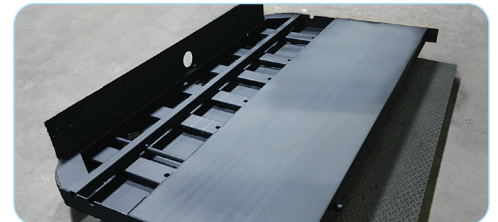
1½" extruded aluminum 20,000 lb high wear duct floor system features 12" centerline crossmembers with full width hardwood fillers from sustainable sources and integral 10" heavy-duty extruded aluminum non-tapered wearband.

■ Thermal barriers



Low conduction barrier between threshold and buckplate reduces heat transfer, optimizing thermal efficiency and lowering reefer unit operating costs.

■ Heavy-duty kingpin section



Approach plate is supported by six formed "toes-down" channels to prevent dishing. The kingpin is AAR-rated and the whole assembly is secured to the bottom rails with stainless steel rivets.

■ **Stainless steel inserts over extruded aluminum corner posts**



Extruded aluminum corner posts provide greater durability for reduced maintenance costs. Replaceable, easy-to-clean polished stainless steel inserts improve appearance for increased resale value.

■ **Stainless steel rear door frame**



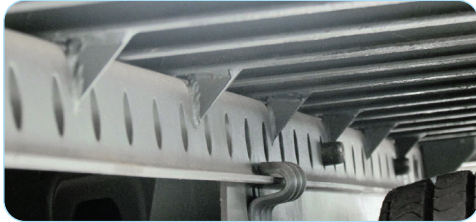
Corrosion resistant, the shallow design door header provides increased rear door opening height for greater loading ease while minimizing load damage.

■ **Bendix® TABS-8 advanced with trailer roll stability program**



Trailer roll stability technology improves trailer safety. It combines anti-lock braking (ABS) with a set of trailer sensors that monitor stability and automatically trigger braking intervention when detecting conditions that may lead to trailer rollover.

■ **Diagonal reinforcing gussets on slider rails**



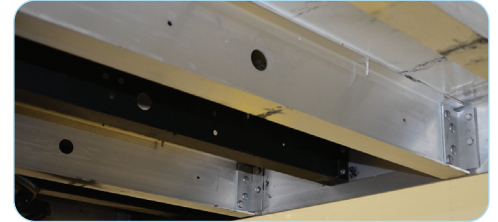
Welded steel reinforcing gussets increase torsional stiffness and strength for superior slider rail stability.

■ **USS-120A-4 aerodynamic side skirt**



SAE tested and SmartWay®-verified to improve fuel savings, the Utility Side Skirt is also CARB-compliant when used with low rolling resistance tires.

■ **5½" deep extruded aluminum crossmembers**



Light weight crossmembers in the bay area provide optimal floor strength and reduced tare weight providing greater durability and higher payload capacity.

■ **D.O.T. rated I.C.C. bumper**



Fully integrated into the rear threshold assembly, this high strength steel bumper complies with U.S. D.O.T. and Transport Canada safety regulations. The 7" deep horizontal bumper provides superior strength and protection.

■ **Ultra Road Shield™ Plus (URS+)**



ASTM proven, this two coat acrylic system with urethane primer enhances corrosion protection, minimizes the effects of weathering and keeps the trailer looking better, longer.

■ **Lining corner closures**



Fastener free extruded aluminum closures are designed with capture channels to encapsulate the adjacent lining for greater protection against moisture intrusion into the foam insulation.

■ **Corrosion protection**



A kingpin section fully immersed in rust preventative coating, a stainless steel rear case, and barrier tape between dissimilar metals reduces the potential for corrosion.

■ **100% LED lighting**



Our LED lighting package provides longer service hours and lower draw on the battery for reduced maintenance costs.

■ **Impact-absorbing rear gusset**



13½" deep rear gusset connects rear door frame to bottom rail, reducing dock impact damage and providing a recessed area to protect lower rear lights.